



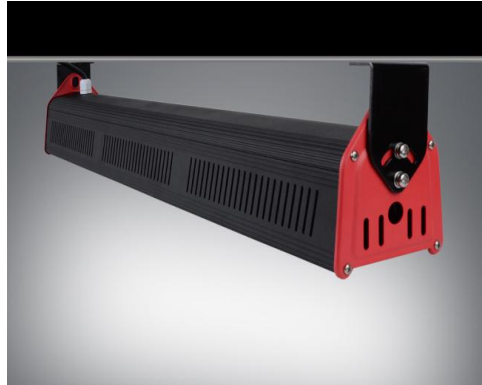
Hunan Kontak Technology Co.,Ltd

Add:No 59 Furong Middle Road Second Section,Changsha City,Hunan Province.China
 Tel:+86 731 85860892 Email: kontak@kontak-cn.com,Website: kontak-cn.en.alibaba.com



LED Linear High Bay Light --- (127LM/W)

5 years warranty



Extended wires	1.0M wires : Plus \$2.5 2.0M wires : Plus \$3.0 3.0M wires : Plus \$3.6 4.0M wires : Plus \$4.2
Label Lasering	COST FREE
Dimmable	50W: Plus \$1.8 100W: Plus \$3.0 150W: Plus \$3.0 200-240W: Plus \$3.0
Lens options	IP Rating : IP65 waterproof Housing Color: Sandy Black / Grey Symmetrical Angle: 30° / 60° / 90° Polarization Angle : 30*70° / 60*120° / 80*155°

Ceiling/Wall Mount(rotatable)

Chain hanging style

Roof/wall mount Kits (installation angle rotatable)	 \$1.8/set	Waterproof Sensor	 \$28.8/Set	Free Standard equipment: 2sets of 1m wirerope+2 hooks	
				If you need longer size wirerope 1.5m wirerope : Plus \$1.2 2.0m wirerope : Plus \$1.8	

Model NO.	Wattage	Input Voltage	Driver	LED Brand	Lumen	Color Temperature	Certificates	< 200pcs	<1000pcs
KTHL3505-50W	50Watt	100-277VAC	UL CE driver FD-55H-054	Lumileds SMD 3030	6350Lm	3000K 4000K 5000K 5700K 6500K	CE RoHS	US\$36.0	US\$34.8
KTHL3505-100W (Same as DLC NO.)	100Watt	100-277VAC	Meanwell XLG-100-H-A	Lumileds SMD 3030	12700Lm	3000K 4000K 5000K 5700K 6500K	TUV CE RoHS ETL DLC	US\$64.2	US\$63.0

KTHL3505-150W-A (Same as DLC NO.)	150Watt	100-277VAC	Meanwell XLG-150-H-A	Lumileds SMD 3030	19000Lm	3000K 4000K 5000K 5700K 6500K	TUV CE RoHS ETL DLC	US\$79.2	US\$76.8
KTHL3505-200W-A (Same as DLC NO.)	200Watt	100-277VAC	Meanwell XLG-240-H-A	Lumileds SMD 3030	25400Lm	3000K 4000K 5000K 5700K 6500K	TUV CE RoHS ETL DLC	US\$100.8	US\$98.4
KTHL3505-240W	240Watt	100-277VAC	Meanwell XLG-240-H-A	Lumileds SMD 3030	30500Lm	3000K 4000K 5000K 5700K 6500K	CE RoHS	US\$112.8	US\$110.4



Package Details

50W: 1pc/carton carton size: 41*19*22cm
 100W: 1pc/carton carton size: 67*19*22cm GW: 4.9Kg
 150W: 1pc/carton carton size: 95*19*22cm GW: 5.95Kg
 200W: 1pc/carton carton size: 122*19*22cm GW: 6.30Kg (超长)
 240W: 1pc/carton carton size: 150*19*22cm GW: 7.20Kg (超长)

Size of all Linear High Bay Ligts
 50W-B: 353*115*144mm (13.90' * 4.53' * 5.67')
 100W-B: 620*115*144mm (24.41' * 4.53' * 5.67')
 150W-B: 887*115*144mm (34.92' * 4.53' * 5.67')
 200W-B: 1154*115*144mm (45.43' * 4.53' * 5.67')
 240W-B: 1421*115*144mm (55.94' * 4.53' * 5.67')

Remarks:
 1.Above pricing are based on EX-W Factory,VAT,delivery fee are not included
 2.Payment Method: T/T , Western Union and Paypal
 3.Payment Term: 50% deposit and 50% balance paid completed before shippment
 4.Ballast should be bypassed pior to installation
 5.Lead time: Within 5-7 working days after receipt of payment for samples;
 10-15 days for bulk quantity
 6.Quotation Validity : 90 days (from 12th April 2019)

Warehouse shelf application

